

SWAN NECK SINGLE HEIGHT PEDESTAL

PED-9881-SS



FEATURES

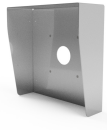
- Stainless Steel Brushed Finish
- Aesthetically pleasing and durable
- Can be used for a variety of access control device and intercoms
- Ideal for Gate Entry points
- Devices to be surface mounted
- Standard Mounting plate

SPECIFICATION

Dimensions	<ul style="list-style-type: none">• Height:<ul style="list-style-type: none">- Vehicular Height - 1020.0 mm• Section: Ø50.8 mm
Material	<ul style="list-style-type: none">• Stainless Steel 304 Grade• Finish - Brushed, 320 Grit
Weight	<ul style="list-style-type: none">• 4.7kg

Devices such as intercoms, card readers, strobes, etc. are not supplied by Prism Engineering Ltd.

ADDITIONAL OPTIONS



Weather Cowl*



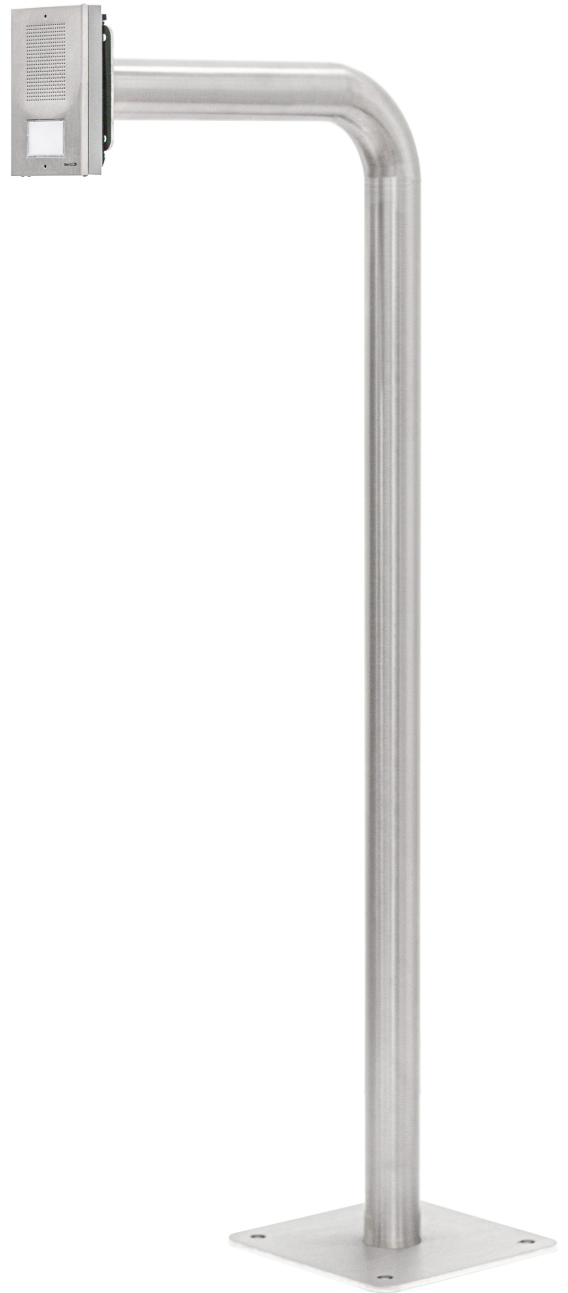
Mounting Root Cage*



Powder Coating*



316 Marine Grade*



www.prismengineering.ie



19 Ballymount Road, Walkinstown - Dublin 12, Rep. of Ireland, Eircode - D12 K275
Ph : +353 (0)1 456 5424 - E: sales@prismengineering.ie