

# SWAN NECK DOUBLE HEIGHT PEDESTAL

## PED-9563-SS

### FEATURES

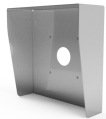
- Stainless Steel Brushed Finish
- Aesthetically pleasing and durable
- Can be used for a variety of access control device and intercoms
- Ideal for Gate Entry points
- Devices to be surface mounted
- Standard Mounting plate

### SPECIFICATION

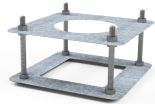
Dimensions	<ul style="list-style-type: none"><li>• Height: - 2100.0 mm</li><li>• Section: Ø76.2 mm</li></ul>
Material	<ul style="list-style-type: none"><li>• Stainless Steel 304 Grade</li><li>• Finish - Brushed, 320 Grit</li></ul>
Weight	<ul style="list-style-type: none"><li>• approx. 10.0kg</li></ul>

Devices such as intercoms, card readers, strobes, etc. are not supplied by Prism Engineering Ltd.

### ADDITIONAL OPTIONS



Weather Cowl\*



Mounting Root Cage\*



Powder Coating\*



316 Marine Grade\*

\*Additional costs and lead times apply



[www.prismengineering.ie](http://www.prismengineering.ie)



19 Ballymount Road, Walkinstown - Dublin 12, Rep. of Ireland, Eircode - D12 K275  
Ph : +353 (0)1 456 5424 - E: sales@prismengineering.ie

