

SWAN NECK SINGLE HEIGHT PEDESTAL STYLE

FEATURES

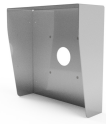
- Stainless Steel Brushed Finish
- Aesthetically pleasing and durable
- Can be used for a variety of access control device and intercoms
- Ideal for Gate Entry points
- Devices to be surface mounted
- Standard Mounting plate

SPECIFICATION

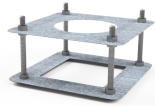
Dimensions	<ul style="list-style-type: none">• Height:<ul style="list-style-type: none">- Vehicular Height - 1020.0 mm• Section: Ø50.8 mm
Material	<ul style="list-style-type: none">• Stainless Steel 304 Grade• Finish - Brushed, 320 Grit
Weight	<ul style="list-style-type: none">• approx. 5.0kg

Devices such as intercoms, card readers, strobes, etc. are not supplied by Prism Engineering Ltd.

ADDITIONAL OPTIONS



Weather Cowl*



Mounting Root Cage*

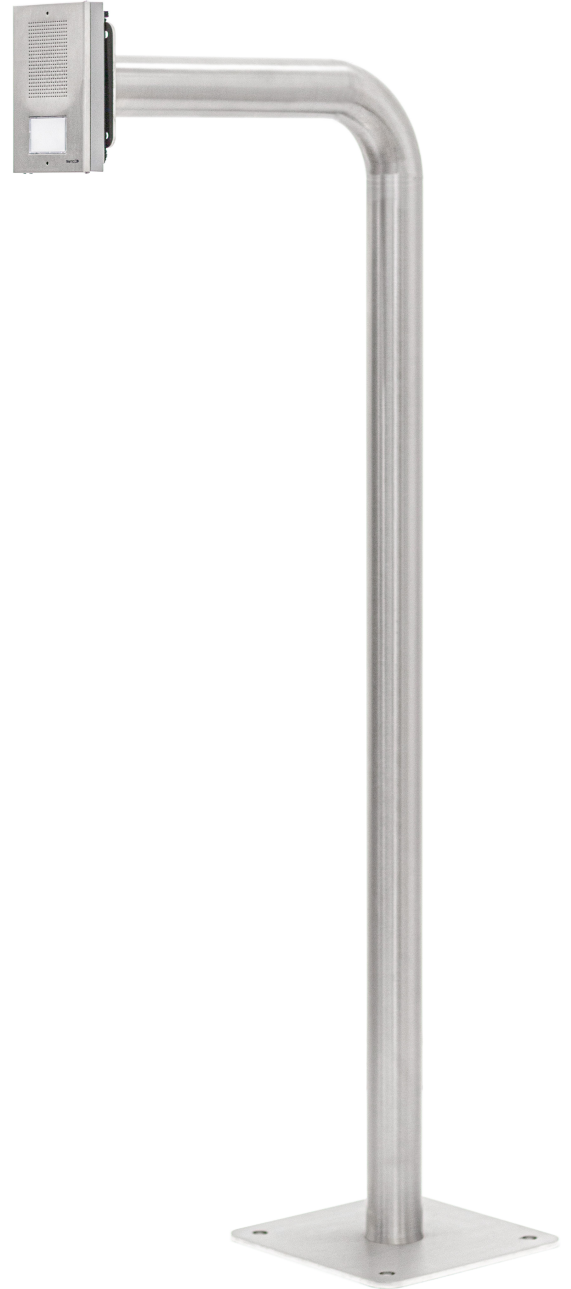


Powder Coating*



316 Marine Grade*

*Additional costs and lead times apply



www.prismengineering.ie



19 Ballymount Road, Walkinstown - Dublin 12, Rep. of Ireland, Eircode - D12 K275
Ph : +353 (0)1 456 5424 - E: sales@prismengineering.ie

